



Welcome

April 2025

Year 11 Information Session



7 school days until the first whole year group GCSE exam.

Positivity!!

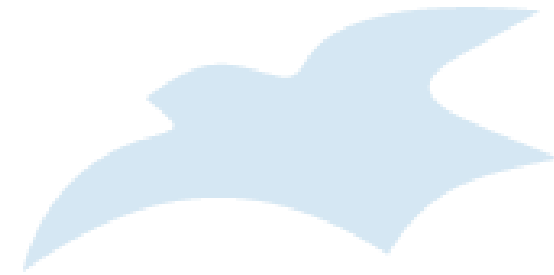
This can be a stressful time for some of our learners but remember there is always support in school. Email your child's Form Tutor and we will be able to look at how we can support them.

PROM – *FRIDAY 27TH JUNE 2025*



King Power Stadium

- 6:30 – 10:45pm
- Theme: 'A night under the stars'
- Buffet dinner
- Pay on Beehive
- Deadline for payments: Monday 3rd June
- Letters have been sent.





Monday 16th June

- After Physics exam.
- If learners want shirts signed, they must bring a spare one with them to school. It is vital that they have a spare shirt as learners will not be permitted to enter their exam in a shirt that has been signed / designed.
- After assembly they will leave site.
- One school bus will be provided.
- A letter with more information will come out over the next couple of weeks



We don't have study leave away from school.

Timetable is adapted to ensure there is focussed revision time with subject specialists.

Until all cohort exams are finished all Year 11 are expected at school.

EXAM INFORMATION



- The exams start on Thursday 1st May
- They run over 7 weeks (until Wednesday 18th June)
- Prior to the first exam, candidates need to have read the LET Exams Booklet sent out on Beehive.
- Exams start at 9am or 1pm and are between 45mins to 2 hours long
- Learners have to complete the FULL time, there is no leaving early
- The contingency date is 25th June (please leave this date available)

INDIVIDUAL CANDIDATE TIMETABLE



Looks like this:

Individual Candidate Timetable

Season :
Name :
Candidate Number :
UCI :

Centre Number :
Year :
Reg Group :
ULN :

Date	Start Time	Board	Level	Element Code	Element Title	Component Code	Component Title	Duration	Room	Seat
Mon 11 May	9:15AM	WJEC/GCSE	GCSE/B	445101	Religion & Life Issues	44510001	Religion & Life Issues	1h 45m	MAIN GYM	A2
Tue 12 May	9:15AM	EDEXL/GCSE	GCSE/B	5FR01	French 1	5FR011F	Listening (F)	0h 25m	A6	A1
Tue 12 May	10:15AM	EDEXL/GCSE	GCSE/B	5FR03	French 3	5FR033F	Reading (F)	0h 35m	A6	A1
Fri 15 May	1:30PM	EDEXL/GCSE	GCSE/B	5PE01	Physical Education 1	5PE0101	Theory of Physical ED.	1h 30m	MAIN GYM	D2
Mon 18 May	9:00AM	WJEC/GCSE	GCSE/B	420102	English Literature Unit 1 Higher	42010002	English Literature Unit 1 Theory Higher	2h 00m	MAIN GYM	C1
Tue 19 May	1:15PM	AQA	GCSE/B	90301F	Geography A Unit 1 Tier F	90301F	Geography A Unit 1 Tier F	1h 30m	MAIN GYM	A3
Fri 22 May	9:00AM	WJEC/GCSE	GCSE/B	420202	English Literature Unit 2A Higher	42020002	English Literature Unit 2A Theory Higher	2h 00m	MAIN GYM	B10
Mon 01 Jun	1:15PM	AQA	GCSE/B	45451	D & T: Food Technology Unit 1	45451	D & T: Food Technology Unit 1	2h 00m	MAIN GYM	A4
Tue 02 Jun	9:00AM	WJEC/GCSE	GCSE/B	417102	English / English Higher Tier	41710002	English / English Unit 1 Higher	1h 00m	MAIN GYM	A10
Tue 02 Jun	10:15AM	WJEC/GCSE	GCSE/B	417202	English / English Higher Tier	41720002	English / English Unit 2 Higher	1h 00m	MAIN GYM	A10
Wed 03 Jun	1:15PM	AQA	GCSE/B	90302F	Geography A Unit 2 Tier F	90302F	Geography A Unit 2 Tier F	1h 30m	MAIN GYM	A1
Thu 04 Jun	9:00AM	EDEXL/GCSE	GCSE/FC	1MA0H	Mathematics A (Linear) Option H	1MA01H	Non Calculator (H)	1h 45m	MAIN GYM	C8
Fri 05 Jun	1:30PM	EDEXL/GCSE	GCSE/B	5BI2F	Add. Science/Biology B2	5BI2F01	Components of Life (F)	1h 00m	MAIN GYM	B2
Mon 08 Jun	9:00AM	EDEXL/GCSE	GCSE/FC	1MA0H	Mathematics A (Linear) Option H	1MA02H	Calculator (H)	1h 45m	MAIN GYM	C8
Tue 09 Jun	1:30PM	EDEXL/GCSE	GCSE/B	5CH2F	Add. Science/Chemistry C2	5CH2F01	Discovering Chemistry (F)	1h 00m	MAIN GYM	B2
Fri 12 Jun	1:30PM	EDEXL/GCSE	GCSE/B	5PH2F	Add. Science/Physics P2	5PH2F01	Phys. for Your Future (F)	1h 00m	MAIN GYM	B2

EXAM INFORMATION



- Where possible, a 1 hour 40 minute long revision session is planned before each exam
- Otherwise learners continue to attend their timetabled lessons
- Revision rooms will be in place for subjects where the exam has already been sat
- Go to lines at the bottom of the steps up to the field each morning.
- Take your bag with you and leave outside of exam room (sports hall changing rooms).
- Absent learners will be contacted ASAP

PUNCTUALITY AND ABSENCE



- If a learner is more than 30 minutes late to an exam, they will not be admitted
- However, even being 5 minutes late disrupts the other learners
- If you are ill, you must inform the school before the exam is due to start. Notifications received afterwards won't count.
- Unless it is absolutely impossible for your child to attend, they should always try to sit their exams.
- Unforeseen absences such as funerals or bereavements, you must contact the school as soon as possible. You *may* be able to sit your exam earlier or later in the day.

EQUIPMENT AND UNIFORM



- You must come prepared! Full school uniform **must** be worn for all exams.
- **Black pens!!! Bring at least 2. Remember ruler, calculators etc if relevant to an exam.**
- You must not use tippex or gel pens
- You can use highlighters but you must not highlight your answer.
- Clear plastic pencil cases only.
- Photo card school IDs will need to be taken into the exam. You will need the photos on them to be uncovered (some in the mocks had stickers over the photo) and there to be no writing on them (this could be considered a note).

IMPORTANT REMINDERS AND TOILET ETIQUETTE



- Scientific calculators need to have their memory "cleared" prior to each exam they are used in.
- If you're required to sign your name on the cover of your exam paper, please remember to do so when prompted.
- Leaving exams to go the toilet is not permitted in the first 30 minutes or last 15 minutes of exams. No going to the toilet at all in exams where audio is played (Media or MFL). Learners with specific medical need re of course exempt from this rule.
- Learners have to be escorted to the toilet, one at a time. In some rooms they will have to wait for the roving invigilator to come.
- This is very disruptive to other learners so must be kept to a minimum and should only happen in longer exams.



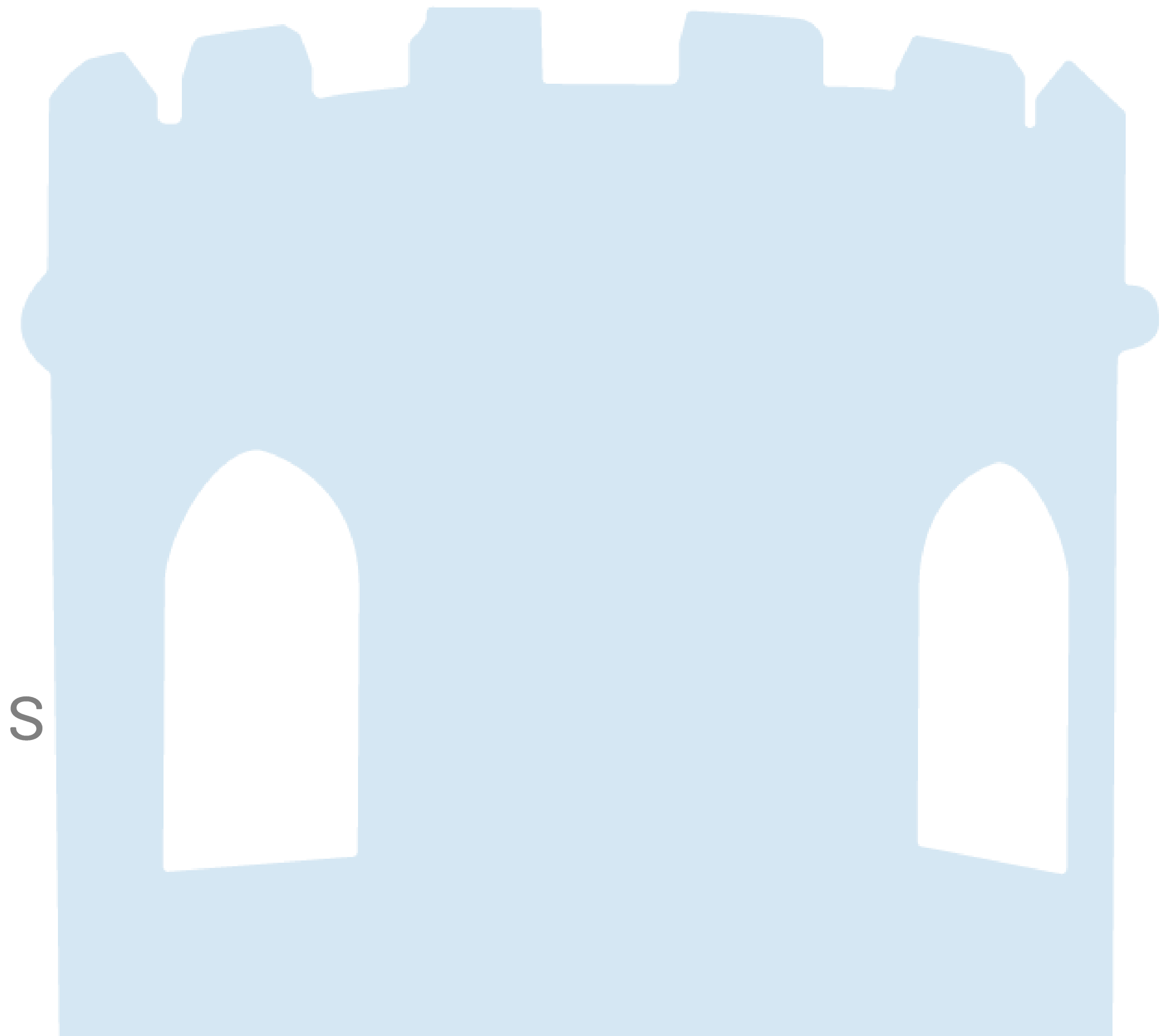
- Only water in a clear plastic bottle is permitted



- No fizzy drinks
- No labels on bottles
- No coloured sports bottles
- No 'Love Island' bottles



- Bottles must be free of writing and logos





Do not:

- Cheat
- Use unauthorised notes
- Copy from another student
- Communicate with another student
- Turn around
- Bring a watch or phone in to the venue

All of the above could result in being disqualified from your exams.



- The papers are scanned in by the exam boards
- Markers work on screen, not with the actual paper
- Presentation is important, handwriting must be legible
- Do not use tippex or highlighters on your work. Highlighters can be used to highlight key words in the question only.

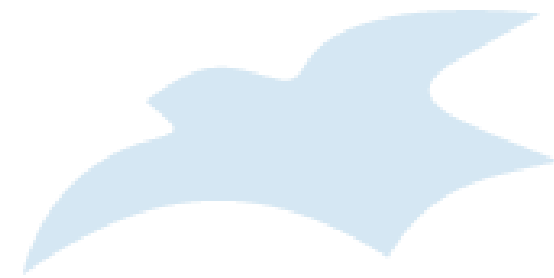


THE MOST IMPORTANT VIDEO YOU WILL SEE THIS TERM...

**The
ExamsOffice**
Instructions for Candidates



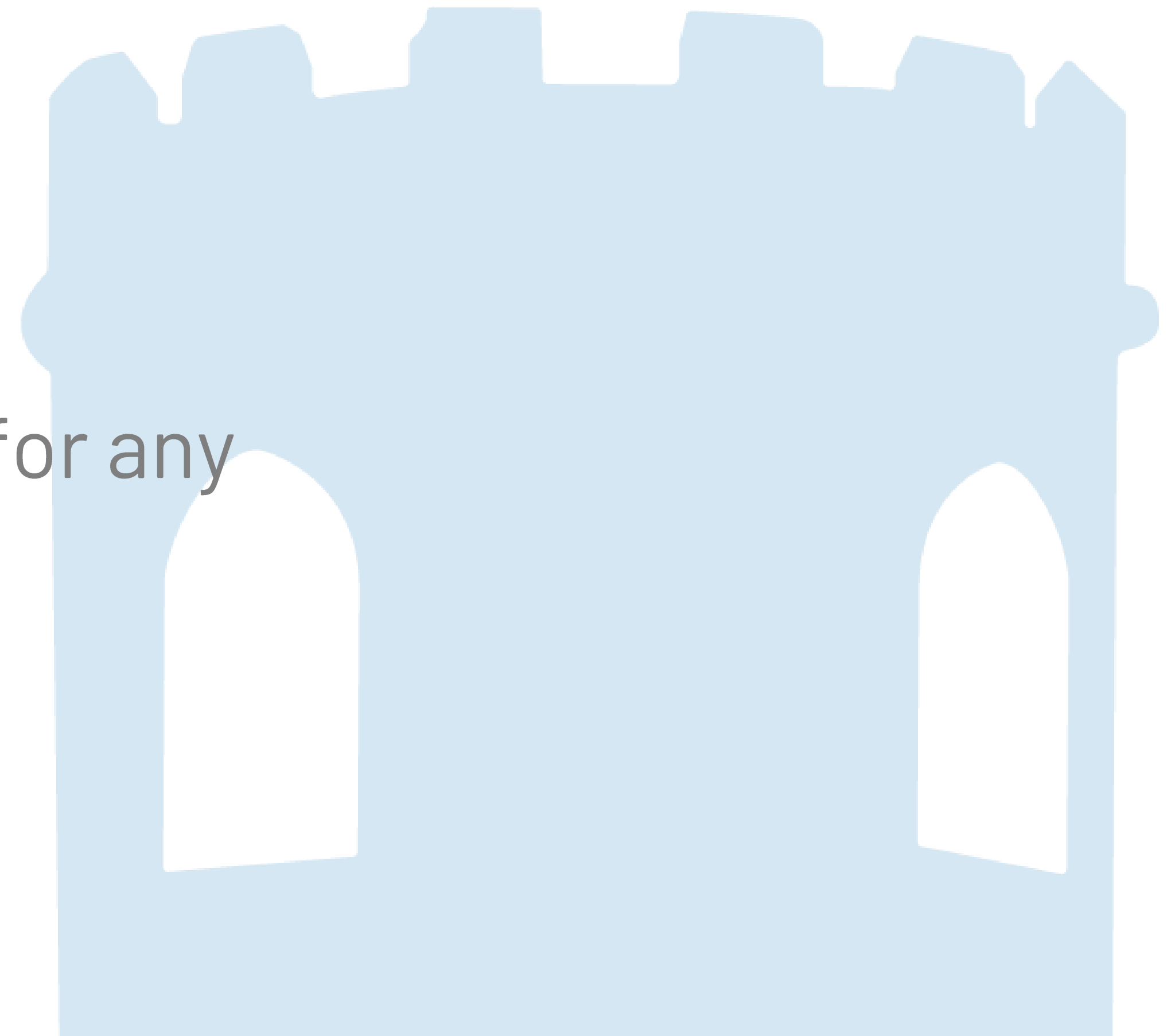
Thursday, August 21st 2025



Results can be collected from school.

Doors will be open from 8am.

All of SLT and exam staff will be on hand for any queries/celebrations.





- Exams@martinhigh.org.uk for all your exam queries. Miss Hollis replies very quickly!
- "Examinations" section of the school website. Lot of useful information here.
- The "Examinations booklet". A link to this has been emailed to you so you need to read it and then confirm you understand the JCQ regulations.



Final push...

Weekly HW booklet

Students complete a section each week – focus on GCSE Exam Practice.

Year 11 GCSE Revision Homework B Foundation	
Name	
Teacher	
Homework	Due in
A	
B	
C	
D	
E	
F	
G	
H	

L:\Curriculum\Maths\2020-2021\GCSE Year 11 revision\Homework booklets\2 Year 11 GCSE Revision homework booklet B (foundation).docx

Complete Maths Tutor

Teachers have set Courses specifically aiming to close the gap from every question your child got wrong from Trials 1, 2 & 3.

Completing these before the exams (starting 16th May) will give every opportunity for your child to reach their potential!

Course

Trial 3 (F) Q1

1 Ideas 4 Goals

Pupils enrolled **35**

PREVIEW

Course

Trial 2 (F) – Q26c

1 Ideas 7 Goals

Pupils enrolled **22**

PREVIEW

YEAR 11 PARENTS INFORMATION EVENING - MATHS



Trial 3 closing the gap

Question level analysis for every child. Given out in lessons this week...**QR codes** to take them to support to help close the gap.

KS4 Revision Strategy

Focused support for revision not only with Maths, general study support and tips.

Maths GCSE: Trial Exam 3

Grade Boundaries

Grade	9	8	7	6	5	4	3
Marks	66	58	48	37	26	14	9


You need 2 more marks to get a grade 4.

Questions

Questions	Out of	Score
1 Expand a single bracket	1	0
2a Convert decimal to improper fraction	1	0
2b One amount as a percentage of another	1	1
3 Use Pythagoras to calculate a missing side	3	3
4 Calculate a bearing	1	0
5 Work out the cheapest option from three shops	5	5
6a Understand fractions of amounts	1	1
6b Know how to calculate a pie chart angle	1	0
7 Calculate the volume of composite solid on isometric paper	3	0
8 Calculate the average speed over a two-part journey	4	0
9 Continue an algebraic sequence and add up the terms	3	0
10 Regions with probability notation	1	1
11 Probability problem solving	1	0
12 Calculate a weighted average	3	0
13 Work out the equation of a line when given coordinates	3	0
14 Loci and construction	4	0
15a Understanding relative frequency	2	0
15b Estimating from relative frequency	1	0
16 Negative numbers and inequalities	1	0
17a Grouped frequency table	2	0
17b Reading a cumulative frequency graph	2	0
18 Proof by completing the square	3	0
19 Direct proportion to expression	1	0
20 Change the subject of a formula (subject appearing twice)	4	0
21 Calculating and interpreting bounds	3	0
22 The Difference of two squares (in algebraic form)	1	1
23a Velocity time graph (area under a curve)	3	0
23b Velocity time graph (acceleration)	2	0
24 Multiply algebraic fractions	3	0
25 Apply similarity to volumes	4	0
26 Using an iterative formula	3	0
27 Simultaneous equations with a function	4	0
28 Use trigonometry in 3D	3	0
29 Permutations and probability	2	0
Number and Ratio	25	7
Algebra	22	1
Shape, Space and Measure	19	3
Data and Probability	14	1


Topics identified that you need to work on:

1: Expand a single bracket




<https://bit.ly/3PXwOjL>

2a: Convert decimal to improper fraction




<https://bit.ly/3PXwOjL>

4: Calculate a bearing




<https://bit.ly/3PXwOjL>

6b: Know how to calculate a pie chart angle




<https://bit.ly/3PXwOjL>

7: Calculate the volume of composite solid on isometric paper




<https://bit.ly/3PXwOjL>

8: Calculate the average speed over a two-part journey




<https://bit.ly/3PXwOjL>

9: Continue an algebraic sequence and add up the terms



<https://bit.ly/3PXwOjL>

11: Probability problem solving



<https://bit.ly/3PXwOjL>

AQA GCSE Mathematics - Paper 1 (Non-Calculator) Thursday 16th May 2024

AQA GCSE Mathematics - Paper 2 (Calculator) Monday 3rd June 2024




AQA GCSE Mathematics - Paper 3 (Calculator) Monday 10th June 2024

Equipment List




Black pen, pencil, rubber, sharpener, clear ruler, compass, protractor, scientific calculator

Intervention

Continues to take place every Thursday (3.05pm – 4pm) – we fill in gaps from all previous papers.



YEAR 11 REVISION HINTS, TIPS & SUPPORT...

Website	How to use it	How this helps
Complete Maths Tutor 	<p>Link: Complete Maths Tutor</p> <p>Teachers has set specific tasks to support you learning and progress.</p> <p>When you struggle, use the 'Do' section of the Goal to watch and use worked solutions.</p> 	<p>This is a metacognitive strategy (help you to be independent with your learning) where you can use worked solutions to relate to questions you are struggling with.</p> <p>Copy some or all of their worked solutions when completing the "Quiz".</p>
Maths Genie <i>GCSE Revision</i>	<p>Link: Maths Genie</p> <p>You can choose the Topic you want to specifically revise.</p> <p>You can also select the GCSE Grade you are aiming to achieve and topic which will help you achieve this target grade.</p>	<p>Use the Exam Questions and solutions to check your understanding.</p> <p>Watch the video provided to support your understanding.</p>
Maths Genie <i>AQA Practice Papers</i>	<p>Link: Maths Genie</p> <p>Practice past papers to support the application of learning in exam style language.</p> 	<p>Paper 1 – Non calculator Paper 2 – Calculator Paper 3 – Calculator</p> <p>Hint...try and use the solutions alongside the questions to piece together the steps needed to solve a problem.</p>
GCSE BBC Bitesize	<p>Link: AQA BBC Bitesize</p> <p>Practice past papers and quick fire questions.</p>	<p>Use their 'Study Support Section' with a range of study tips and advice</p>

PUPIL CENTRED, POSITIVE AND PROFESSIONAL



- Monday 13th May – English Literature Paper 1
 - Macbeth
 - A Christmas Carol
- Monday 20th May – English Literature Paper 2
 - An Inspector Calls
 - Poetry Anthology
 - Unseen Poetry
- Thursday 23rd May – English Language Paper 1
 - Fiction
- Thursday 6th June – English Language Paper 2
 - Non-fiction



- Exercise books – should all be at home now
- Writing up practice questions (started in English lessons)
- Completing past papers (AQA website)
- Use of the Lionheart VLE: questions, knowledge, live lessons, etc
- Seneca to test and revise key knowledge and quotes
- Use of YouTube for revision videos
- Retrieval activities: knowledge dumps, flashcards, quote recall, etc

SCIENCE – TRIPLE AND COMBINED



- There are **six exams** - Three before, and three after May half term.
- Triple Science Exams are - 1hr 45 minutes - 100 marks each
- Combined Science Exams are - 1 hr 15 minutes - 70 marks each
- Biology Paper 1 10th May (am)
- Chemistry Paper 1 17th May (am)
- Physics Paper 1 22nd May (am)
- Biology Paper 2 7th June (pm)
- Chemistry Paper 2 11th June (am)
- Physics Paper 2 14th June (pm)
- Equipment needed: **black pen x 2, pencil, ruler and a calculator.**



Email - Navdip Kaur - Outlook

AQA | Subjects | Science

+

→ ↺ 🏠 🔒 aqa.org.uk/subjects/science

GCSE Biology

8461

Next exam: 10 May 2024
Biology Paper 1

Past papers >

GCSE Chemistry

8462

Next exam: 17 May 2024
Chemistry Paper 1

Past papers >

GCSE Physics

8463

Next exam: 22 May 2024
Physics Paper 1

Past papers >

GCSE Combined Science: Trilogy

8464

Next exam: 10 May 2024
Science

SCIENCE REVISION – WHAT SHOULD Y11 BE DOING?

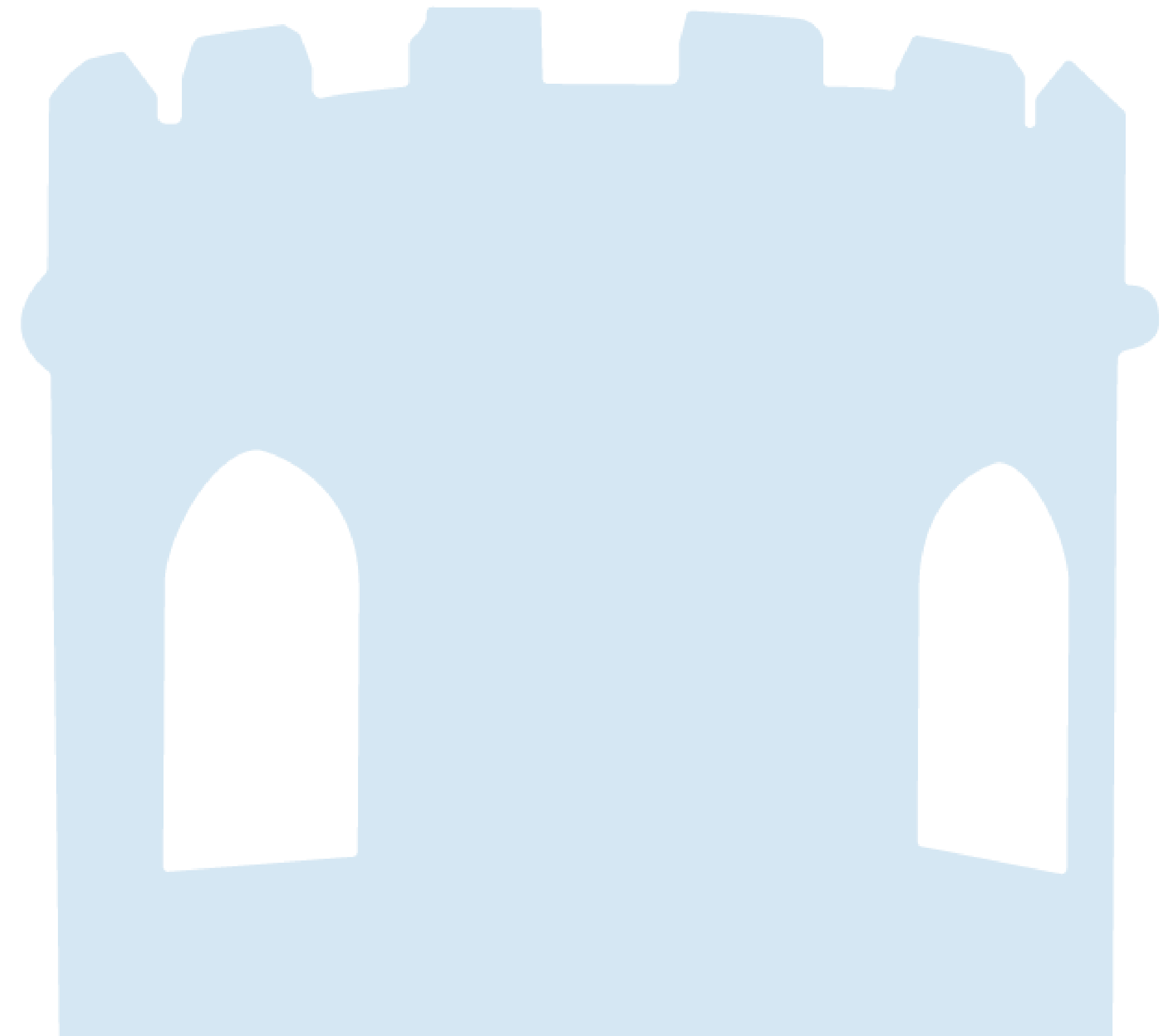


- AQA Past papers on the AQA website (search “AQA Science past papers Trilogy”
OR “AQA Biology/Chemistry/Physics GCSE past papers”)
- Download exam papers **and mark schemes** – use model answers to help you revise topics – Student MUST mark what they answer.
- Eat the Elephant resource
- CGP revision guides and work books
- Knowledge organisers
- <https://www.physicsandmathstutor.com/> – revision and exam practice for all three sciences
- <https://www.savemyexams.co.uk/> – questions by topic and mark schemes
- <https://mathsmadeeasy.co.uk/gcse-science-revision/> – questions by topic and past papers
- https://www.cgpbooks.co.uk/interactive_gcse_science – games and tests
- https://getrevising.co.uk/revision-tests/science_flashcards_3 – online flash cards
- SENECA

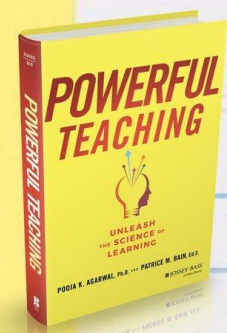
HUMANITIES – KEY DATES



- Tuesday 14th May – Geography Paper 1
 - Human Geography
- Friday 16th May – History Paper 1
 - USA
 - Cold War
- Thursday 5th June – History Paper 2
 - History of medicine
 - Cold War
- Friday 6th June – Geography Paper 2
 - Physical Geography
- Thursday 12th June – Geography Paper 3
 - Case study



HUMANITIES – WHAT SHOULD I BE DOING

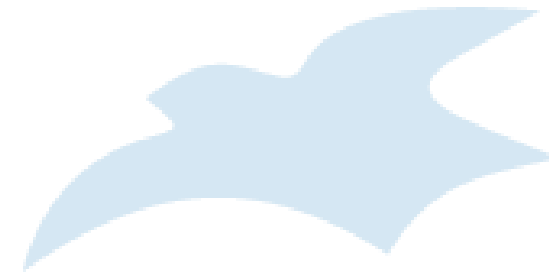


Powerful Flashcards

- 1) Retrieve (don't cheat!)
- 2) Re-order (shuffle and interleave)
- 3) Repeat (at least 3 times)

*Just like lather, rinse, repeat!

Past Papers



AQA

Please write clearly in block capitals.

Centre number

Candidate number

Surname

Forename(s)

Candidate signature

GCSE HISTORY

Paper 1 Section B/B:

Conflict and tension: the inter-war years,
1918–1939

Morning

Time allowed: 1 hour 45 minutes

Knowledge questions

Oceans of the World

1. An ocean is a large body of

a salt water

b fresh water

c lemonade

d blue water





**BBC
Bitesize**

Martin High School Year 11 "Eat the elephant" revision sheet 2024-25

SENECA

Each week is broken up into bite-sized chunks of work, so that by the time you get to your exam, you will have covered all of the essential parts of your course. Underneath each task is a resource link to support your revision. If you need help with revision, please contact your subject teacher. To access the links via the web, go to <https://www.martinhigh.org.uk/current-students/student-support/revision-guidance/> and click "Eat the Elephant"

Academy Week	Week beginning	English Lit	English Lang	Maths Higher	Maths Foundation	Sci trilogy H	Sci trilogy F	Biology	Chemistry	Physics	History	Geography	French	Design and Technology	Food Preparation and Nutrition	Media	Computer Science	Drama	Sport Studies	
16	16th December	1st	Use Seneca to revise the plot of Act 1 of An Inspector Calls.	Use Seneca to revise key terms. There are 5 tasks to complete.	Grade 5: Direct & Inverse Proportion	Grade 3: Fractions	Cell Biology Revision guide p11-23 Workbook p 1-15	Cell Biology Revision guide p11-23 Workbook p 1-12	Cell Biology Revision guide p11-19 Workbook p1-10	Atomic structure and the Periodic table Revision guide p12-18 Workbook p 1-7	Energy Revision guide p11-17 Workbook p 1-9	Developing Cold War (Cards 11-18)	Global Hazards	CGP Revision guide P1-3 'Numbers' and 'Times and Dates'	Use seneca to revise new and emerging technologies	Macronutrients- Proteins (Seneca 2.1 & 2.2)	Use Seneca to revise media language. There are 2 tasks to complete.	1.2.3 Units CGP p.12	Theatre Roles - GCSE Bitesize	R184 - Contemporary Issues in Sport
		2nd																		

EAT THE ELEPHANT AND ELEVATE



The link for Eat The Elephant is:

<https://www.martinhigh.org.uk/media/oqppjw4mf/eat-the-elephant-mhs-y11-2023-24-131223-online.pdf>

Elevate are holding parent webinars. Register using the link below.

- Live Q&A (asking their study skills expert any questions in the run up to exams)
- Help to improving your child's memory

<https://go.elevateeducation.com/ukschoolwebinar>



- Metacognition and self-regulation support students to think explicitly about their own learning, giving them specific strategies for planning, monitoring, and evaluating their learning. As they become increasingly more adept, they can then self-select the most suitable approach for the task at hand.



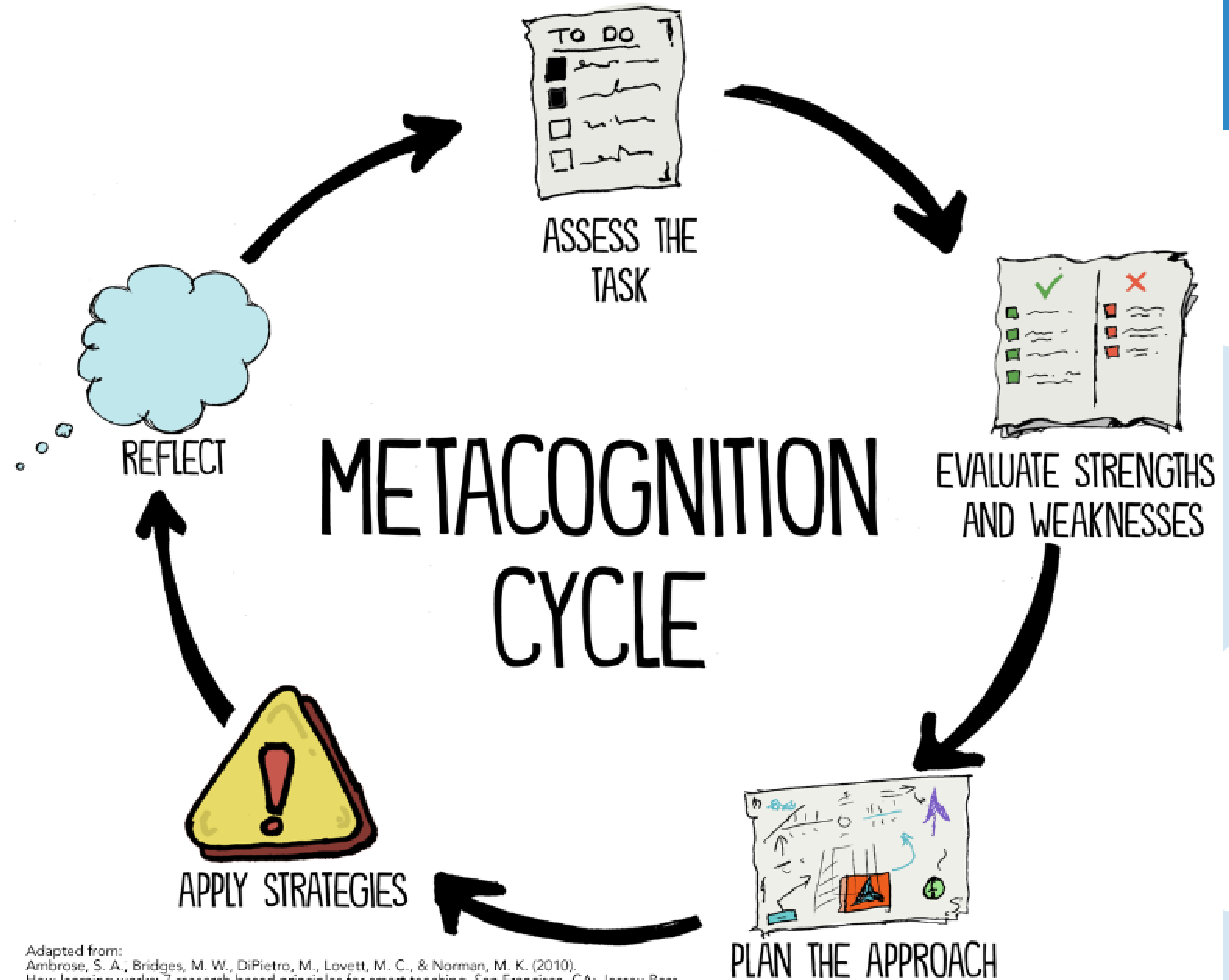
THE POWER OF METACOGNITION

Metacognition is vital for students to thrive in college, in their careers, and in life-long learning. It helps promote autonomy and resiliency. When students improve their metacognitive skills, they are more likely to embrace a Growth Mindset and learn from mistakes.

If we want students to grow into problem-solvers and critical thinkers, we need to help them develop metacognition.



JOHN SPENCER



THANK YOU



Any questions?