



**MARTIN
HIGH SCHOOL**
Lionheart Educational Trust

Be Kind. Work Hard. Aim High.

MARTIN HIGH SCHOOL



PROSPECTUS

Contents

WELCOME FROM OUR PRINCIPALS	5
ACADEMIC EXCELLENCE.....	6
SUBJECTS	8
SCHOOL FACILITIES	14
PASTORAL	16
ENRICHMENT	20
OUR PHILOSOPHY.....	22
ADMISSIONS.....	24
CONTINUE YOUR JOURNEY.....	25
LIONHEART EDUCATIONAL TRUST	27



Welcome to Martin High School

From our Executive Principal and Associate Principal

We are delighted to introduce you to Martin High School.

At Martin High School, we are extremely proud of our whole school community where the focus is on every learner as an individual. We offer a broad and balanced curriculum, supplemented with a variety of enrichment activities. We want to see our proud learners excel in their areas of interest; with a focus on building independence and resilience, so that they are well equipped to become successful members of modern society. Our pastoral care provides learners with a sense of belonging and has learners' personal and social development at the core of the tutor programme, led by our dedicated tutors and our Heads of House.

We hope, as you read this prospectus, you will get a real sense of what Martin High School can offer. 'Inspiring all to dream more, learn more, do more and become more!'



Laura Sanchez
Executive Principal



Nina Smith
Associate Principal

Academic Excellence

Our curriculum is designed to ensure that learners have a rewarding and enjoyable experience of school: one that prepares them for GCSEs, future study and the world of work.

CURRICULUM

We work closely with our feeder primary schools to continue their excellent work, building on learners' prior knowledge while stretching them with new challenges. We also have a strong PSHE curriculum delivered during tutor time to ensure our learners leave Martin High School as informed and responsible young adults.

ASSESSMENT

In order to ensure that learners are making the right progress, we regularly assess and monitor performance. This is done through a number of subject assessments carried out throughout the year. The results of these are used to track individual performance and put in any necessary intervention as soon as it is needed. Parents/carers are updated regularly through reports and Academic Progress Evenings.



SUBJECT	PERIODS PER WEEK <i>50 MINUTES</i>
English Language and Literature	5
Maths	5
Science	5
French	3
History	2
Geography	2
Religion, Ethics and Philosophy	1
Music	1
Technology Design and Technology , Food, Textiles	2
PE	2
Creative Arts Art, Drama, Computer Science	2

The Personal Development Curriculum is delivered on rotation.





Our Subjects

The core subjects are designed to build on the skills and interests developed at Key Stage 2 and to develop a deeper level of learning that creates the perfect foundation for GCSE and beyond. The diversity of courses also provides all learners with the opportunity to explore a variety of ideas, topics and skills in order to nurture engagement and enthusiasm for their learning and progress. The courses at Key Stage 3 have been developed in collaboration with our primary partners and are taught by dedicated subject specialists.

ENGLISH

Learners are encouraged to develop a love of both reading and writing; the focus will be on developing creativity, comprehension and accuracy. Learners will be familiarised with a wide range of text types, distinguishing between forms and developing a sense of the significance of historical context. For example, learners will study: whole novels, short stories, poems and plays. Most importantly, learners of English at Martin High School will become critical and competent readers and writers, well prepared for the rigours and demands of the Key Stage 4 curriculum.

MATHS

Our aim is to teach for mastery in mathematics, meaning learners develop a deep, secure and adaptable understanding of mathematics which will ensure that all pupils have fluency, a growing confidence to reason and the ability to apply mathematics to solve problems.

Becoming fluent in the fundamentals of mathematics includes varied and frequent practice with increasingly complex problems over time, so that learners develop conceptual understanding and the ability to recall and apply knowledge rapidly and accurately. Learners will solve problems by applying their mathematics to a variety of routine and non-routine problems with increasing sophistication, including breaking down problems into a series of simpler steps and persevering in seeking solutions.



SCIENCE

In Year 7 we deliver 12 units covering the fundamentals in Biology, Chemistry and Physics. We fully integrate 'Working Scientifically' where literacy, numeracy and the communication of scientific ideas is core to our teaching. Learners particularly enjoy the practical approach as they develop their scientific theory and we look towards developing ideas in Science GCSE to help lay secure foundations for work in subsequent years.

Our Year 7 curriculum links with the English, Maths and PHSE programme, be it through learning about animal and plant reproduction, acids and alkalis or electricity, and aims to enhance the learning in other subject areas. From the start of Year 7, learners will steadily grow in confidence as they develop scientific curiosity and enquiring minds.

MODERN FOREIGN LANGUAGES

French is studied throughout Key Stage 3, focusing on phonics using various letter strings and sounds. This knowledge is integral and will be used in order to pronounce and recognise new vocabulary in each module studied. Initial learning helps in every aspect of the 4 key linguistic skills of listening, speaking, reading and writing.

Learners move on to study 'Self, family and relationships' which not only teacher the basics in French, for example, saying your name, birthday, age, hair/eye colour and numbers, but also reflects key vocabulary and structures from the new GCSE course. The following modules are 'School' and 'My free time' where learners will once again be given plenty of opportunity to express themselves.

PHYSICAL EDUCATION

PE develops learners' competence and confidence to take part in a range of physical activities that become a central part of their lives, both in and out of school. When they are performing, they think about what they are doing, analyse the situation and make decisions. They also reflect on their own and others' performances and find ways to improve them.

The PE curriculum allows learners to be creative, competitive and to face up to different challenges as individuals and in teams. Emphasis is placed on mass participation as well as providing extensive opportunities for both performance and leadership. A wide variety of PE clubs are available to all, with some very successful sports teams at Martin High School.

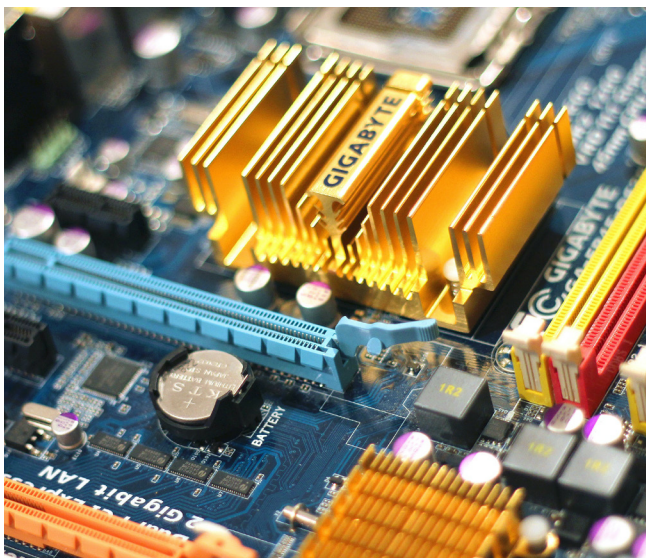


HISTORY

In History, learners follow a chronological narrative that explores how, why and to what extent the world has changed. Learning about the past gives us an idea about what's coming in the future. In Year 7 learners discover UK history from 1066-1500, including the Battle of Hastings, life in Medieval England and the Black Death. The Year 8 curriculum covers the 20th Century looking in particular at both World Wars, The Holocaust and life in post war Britain. GCSE studies begin in Year 9 by looking at America from 1920- 1973 including the KKK, gangsters and prohibition, and Martin Luther King.

COMPUTER SCIENCE

Designed to build on the skills learnt in primary computing, Year 7 learners use the BBC Micro:bit to learn block based programming. They learn the basics of INPUTS (such as temperature sensing) and OUTPUTS (such as LEDs). Theory is always learnt alongside practical activity. Learners who wish to take Computer Science at GCSE will enjoy the chance to get to grips with Python programming in Year 9, which is challenging, but an opportunity to embrace the future in our modern connected world.





GEOGRAPHY

Geography studies people and places, helping learners to understand the world around us so we can lead happier lives and look after our planet. In Year 7 learners develop important skills that will lay the foundations for study at GCSE, while studying topics including mapping, settlements, dangerous rivers and the UK – the country you live in. Year 8 sees learners examine Europe, looking at tourism, population and development, followed by a unit on challenges the whole planet faces. Year 9 units look at the living world, cities, money, resources and natural hazards, with learners completing two pieces of field work, one on rivers and the other on cities.

RELIGION, ETHICS AND PHILOSOPHY (REP)

Our aim is to make REP one of the most interesting and enjoyable subjects to learn at Martin High School. Year 7 learners discover the key aspects of the major world religions including Christianity, Judaism, Islam and Buddhism, then moving on to the more moral aspects of REP in Year 8, including a topic titled 'right and wrong'. In Year 9, learners look at some of the big questions, including 'Does God exist?' and 'Does all life have value?' Learners choosing to study REP at GCSE will learn about people and events in much more depth, with topics currently including Christianity, Islam and aspects of philosophy and ethics.

DRAMA

Drama at Martin High School will help learners develop the creative skills needed to script write, direct, and perform. Drama encourages learners to express and manage their own thoughts and feelings towards different social, cultural and historical issues, which are explored in a safe and controlled environment. The development of these skills encourages self-confidence, self-awareness and more effective communication skills which are essential for life and future employment.

The development of these skills also leads to very engaging and relevant performances by learners, as all school years have the opportunity to be a part of the creative arts school shows.

MUSIC

In Music the emphasis is on practical music making for all pupils, with all Year 7 pupils having a lesson of music per week. They focus on solo and group performance work, develop singing, keyboard and guitar skills, and explore a range of percussion instruments and a variety of styles and genres. At KS3 we operate a 'have a go' policy encouraging pupils to explore a broad range of experiences to discover what enthuses them. The music curriculum focuses on the key areas of performing, composing and listening/appraising.

Across all topics the range of activities includes composing and performing music using voices, tuned percussion, keyboards, guitars, listening and appraising and solo and ensemble playing. All pupils also learn how to use music technology such as Musescore, Garageband, Logic, iPad Orchestra and DJ equipment.

There is also a wide range of extra-curricular clubs and visiting instrumental teachers for pupils to sign up to and develop these skills further.

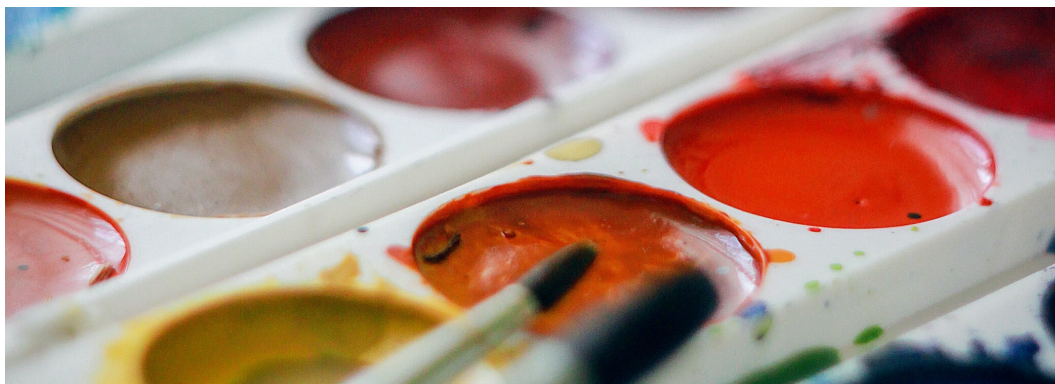
DESIGN AND TECHNOLOGY

Design and Technology is a very dynamic and exciting area of the school curriculum, which throughout Years 7, 8 and 9, learners enjoy ten week blocks of study to include: Food Technology, Textiles and Product Design.

The approach is very much of solving problems, designing and making to meet people's needs. The skills and knowledge learnt are valuable for life as well as preparing learners for future study in these subjects. In Year 10, learners can take GCSEs in: Food preparation and Nutrition, Design and Technology (Textiles), Design and Technology (Product Design), Computer Science and BTEC Construction.

ART

Pupils have the opportunity to access a wide variety of materials to create an exciting selection of artworks. They develop drawing and painting skills, investigating the use of tone and colour. Projects are vibrant and varied and are designed to have an element of flexibility for pupils to explore and create their own, imaginative responses. They will gain an understanding of a variety of artists' work and will be encouraged to show their artist knowledge and inspiration within the work they create. Projects are skills based so that pupils can learn and build on their knowledge. The emphasis is on trying and testing materials and techniques, and becoming more confident with drawing



PRODUCT DESIGN

Learners will solve problems by creating products from materials such as wood, metal and plastic. In Year 7, learners are introduced to metalworking, cutting, shaping and brazing a steel spinner for a board game. Creativity is stretched further with Computer Aided Design (CAD), used to laser cut counters for the board game. Other projects at Key Stage 3 explore the moulding of plastics, particularly acrylic, through the design of a hand-held game, and the creation of a mobile phone stand from plywood. The environmental impact of plastics and woods are explored as part of these projects too.

TEXTILES

In Textiles learners will design and create products using fabric, perfecting a range of techniques. Year 7 gives a basic introduction through an 'Alien Toy' project. Learners research into toy designs of the past, design creatively, learn how to use the sewing machine and construct their product from felt and cotton. Year 8 builds on advanced decoration techniques such as tie dye, applique and Computer Aided Design/ Computer Aided Manufacture (CAD/CAM). Additional topics are addressed in Year 9, such as sustainability when learners undertake a Design and Make A Bag project.

FOOD AND TECHNOLOGY

During Year 7, learners develop a range of basic food preparation skills while making a variety of food products. They will investigate government healthy eating guidelines and nutrition, while learning about the importance of correct food hygiene and safety procedures. Examples of recipes used are; fruit fusion to learn knife confidence and healthy eating; pizzas with a bread base; and melting moments for a cookie sweet treat. With a more advanced level of skills required, Spaghetti Bolognese is reached towards the end of Year 7 as a pinnacle. Through Years 8 and 9 learners progress with their understanding of nutrition and practical cooking skills. In Year 9 there is a greater degree of choice with a two-course meal inspired by cuisine from another country.



School Facilities

We have a state-of-the-art learning environment at Martin High School, in which learners can thrive.

“We’re really lucky with the facilities we have at Martin High. I enjoy spending time in the music studio and I’m looking forward to using the new sports hall. At breaktimes we have lots of space outside to catch up with friends between lessons.”

Martin High Learner



TEACHING SPACES

Our indoor teaching areas include:

- Bespoke English and Maths teaching facilities for a real focus in these key areas.
- Five computer suites plus a Mac suite
- Six fully refurbished Science labs allowing for a broad range of practicals.
- Bespoke humanities building

We are also fortunate to be based on the outskirts of Bradgate Park and benefit from plenty of outdoor learning and indoor space including:

A fully equipped fitness suite • Gymnasium • Netball courts • Football facilities.

DINING & RECREATIONAL SPACES

Martin High School boasts modern, newly refurbished catering facilities with a team of highly creative catering staff. The school has both indoor and alfresco dining opportunities and a huge amount of 'open' space for recreational time. During lunchtime there are a wide variety of extra-curricular interests that learners can access.

LIBRARY

The new library is a hive of activity at break, lunchtimes and after school, offering a wide range of fiction and non-fiction texts, a bank of computers and variety of other educational resources. Learners will spend some time in the library during English lessons to help everyone develop love of reading.

ASPIRE HUB

The Aspire Hub is our inclusion space, offering support for learners who may be struggling to access school. Support is offered through group work, 1:1 sessions, counselling and team building. The Aspire Hub is a really special place at Martin High School.



Pastoral

At Martin High School, we aim to develop the whole child, both holistically and academically.

HOLISTIC DEVELOPMENT

We pride ourselves not just on offering the best academic opportunities, but also in our pastoral systems that focus on each learner as an individual. Learners are safe, happy and well supported during their time at Martin High School; we value their voice and have a strong sense of community which sees our learners thrive.

TUTOR SYSTEMS

Every new starter in Year 7 will join a tutor group with a designated tutor who will work closely with the Head of Key Stage to ensure learners feel well supported and settled into the Martin High School community. These tutors will be the first point of contact for parents and carers, as well as a familiar face for all learners, building a strong bond within the tutor group. Learners will be placed with friends, but will also be encouraged to forge new friendships via tutor group activities.

Our Personal Development Curriculum (PDC) is delivered through the tutor system and on rotation; and we are proud to be part of the PEAK project, providing not just tutorial sessions, but immersion days on key PDC themes. The focus of the tutor will be on being safe, healthy and aspirational in everything that our learners do. There is focus on educational pathways to motivate and inspire learners, facilitated with our partners and links to universities and businesses.



ATTENDANCE & CONDUCT

It is vital that all learners aim to have 100% attendance at school. Research shows that even a few days of absence can have a negative impact on learners' performance and we know that poor attendance can also impact on wider learner wellbeing. Parents/carers should report absence as soon as possible. We operate a system called Truancy Call where if a learner is absent we inform parents by phone call, text, or email. This ensures learners are accounted for and kept safe.

We want Martin High School to be a positive, respectful, and safe environment for everyone and as such we set high standards for behaviour. Our system of achievement points rewards learners for demonstrating A PROUDER WAY and our behaviour points system reminds learners of our high expectations. For the small number of learners who fall below these expectations we intervene with reports home, sanctions, and staff support in order to get learners back on track.

SEN & VULNERABLE LEARNERS

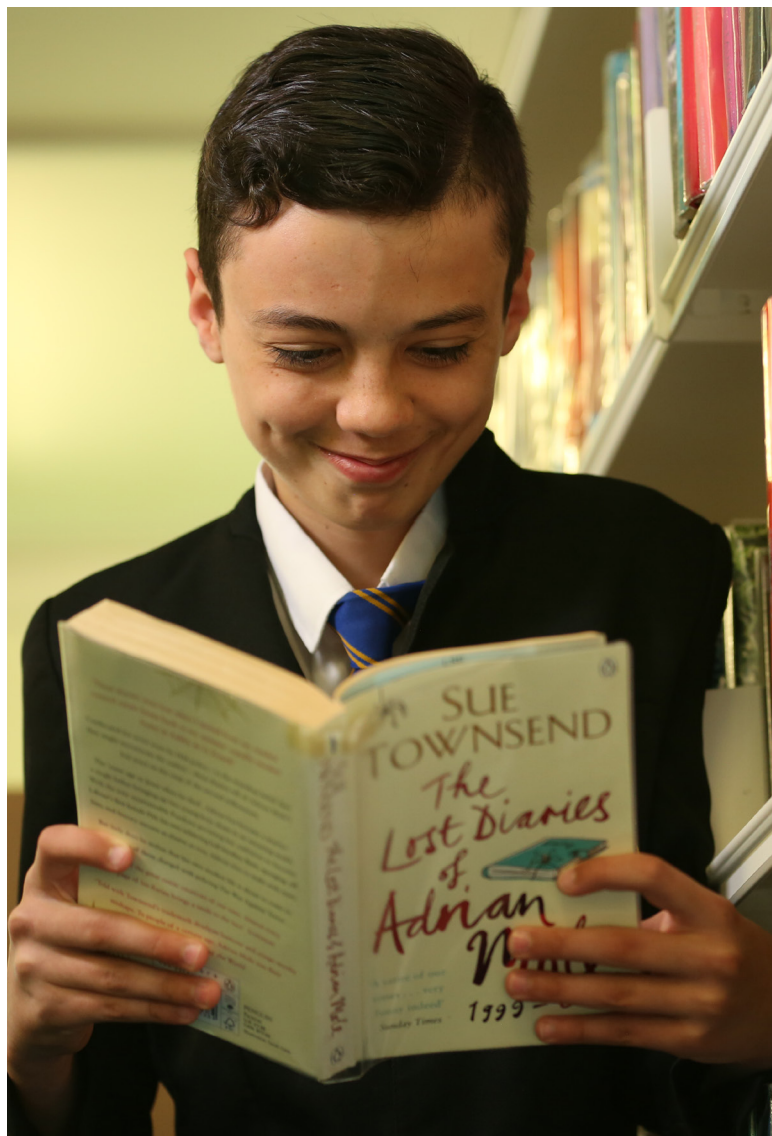
Moving to a new school can be especially difficult for learners who have specific needs. This is why we seek to work closely with their previous school and to keep a constant dialogue with parents/carers and learners. This may involve extra transition days, home visits and liaising closely with relevant external agencies. Once at Martin High School, these learners have access to a designated space as well as the Aspire Hub, with a core team of staff who support and seek to help build confidence to ensure they can be fully integrated with other learners.

UNIFORM

At Martin High School, learners wear a white shirt, school tie, black trousers/skirt and a school blazer. This demonstrates that they are proud members of our school community and have high standards about presentation and representing our school.



**SCAN
HERE FOR
UNIFORM
AND HOW
TO ORDER**



Enrichment

We pride ourselves on supporting students' academic and personal progress through a strong curriculum and a number of enrichment opportunities.

At Martin High School every young person is a valued individual and we want to create a platform for them to go beyond their expectations; parents/carers can feel safe in the knowledge that their child will be encouraged to be everything they want to be.

Extra-curricular activities as diverse as sport, the arts, classics and languages such as Spanish offer learners the chance to work with peers, challenge themselves and find new interests. Trips and excursions, visiting speakers, and careers support start learners thinking about life beyond school and encourage aspiration.

Our Year 7 learners also enjoy participation in whole school drama productions, sports teams and design exhibitions.

Pupils enthusiastically take on responsibilities in school, such as representing the school council. Many pupils get involved with community and charity projects.

OFSTED, 2024



EXTRACURRICULAR ACTIVITIES

Martin High School offers a wide range of extra-curricular activities in all Key Stages to help enrich the learner's experience and inspire learners to explore their passions.

Below is a sample of extra-curricular activities that have been previously organised. Our extra-curricular calendar is very much planned around learner interests and passions, so if learners are passionate about something we can usually find a member of staff who is too and who is able to cater for their needs.

Examples of previous clubs are:

- STEM Club
- Reading Club
- Drama Club
- Art Club
- Music Club
- Classics Club
- Brilliant Club
- Numerous Sporting Clubs
- Duke of Edinburgh's Award





Our Philosophy

We believe every learner has the right to an outstanding education and can be successful regardless of their background.

At the heart of our approach to education are the '4Rs' which underpin everything we believe:

RESILIENCE

Determination • Ability to bounce back • Persistence • Positivity • Effort •

RESOURCEFULNESS

Self-motivated • Proactive • Organised • Curious • Problem-solver

REFLECTIVENESS

Thoughtful • Reasoning • Questioning • Critical • Imaginative

RECIPROCITY

Collaborative • Supportive • Respectful • Communicative • Approachable

Our students demonstrate these 4Rs by being:

Being kind • Working hard • Aiming high

We understand that a critical part of school is achieving good grades. We also know that we play a key part in shaping young people so that they stand out in the workplace with their positive attitude. Through promoting these core values, we believe we can help equip our young people to not only succeed academically, but also socially, spiritually, and culturally.



Admissions Process

Martin High School welcomes applications from students across the city and county.

We hope that as you have read this prospectus, you have been able to appreciate a sense of our excitement and passion for education. We welcome applications from students across the city and county; indeed we have a significant number of applications from outside the catchment area.

It is important to stress that whilst Martin High School is an independent state-funded academy, we have commissioned Leicestershire County Council to manage and administer the application and appeals process.

ADMISSIONS PROCESS

Full details of the admissions process, including contact details for submitting your application, can be found on our website.



SCAN
HERE FOR
ADMISSIONS
PAGE



Apply for school place by
31st October on local council
website.



Results given in early March on Council
website.



Access by signing into your online
admissions account.

If you are not happy with your child's school
allocation, you may appeal via the council.

OR

Accept your child's school allocation on the
council website.

CONTINUE YOUR JOURNEY

WITH LIONHEART EDUCATIONAL TRUST

CEDARS MARTIN SIXTH FORM

Cedars Martin Sixth Form offers pupils a range of A Level subjects so that they can pursue their passion further.

Pupils in the sixth form are taught by expert teachers in small groups where they will be supported and challenged to make rapid progress and meet exacting high standards. Our well-resourced Post 16 hub, with fantastic facilities and excellent resources, allows pupils to make the most of their educational experience. Pupils do exceptionally well and the provision has been noted as a particular strength by OFSTED. Also, as shown by our progress score, highest in the County in 2019.

Our Post 16 provision is committed to the holistic development of each pupil. Personalised learning and pastoral care is at the heart of the school and opportunities for work experience, local and international trips and volunteering projects broaden the opportunities available to our pupils after their A Levels. Our student support team build strong links with the pupils' home, ensuring that there is support and understanding from all involved in the A Level journey. Moreover, we believe learning in familiar settings, with staff that our pupils have worked with before, makes the transition from GCSE to A-Level smoother. Our partnership with local businesses and universities also mean that the sixth form provides a strong foundation for our pupils' next steps in to further education and the workplace.

By knowing each pupil, Cedars Martin Sixth Form works to instil confidence so that students make the most of their higher educational journey.

For more information about subjects offered, support available and a fuller explanation of what we provide at Cedars Martin, please visit our website and ask for a copy of our prospectus.



BEAUCHAMP CITY SIXTH FORM LEICESTER CITY CENTRE

Beauchamp City Sixth Form, based in Leicester's City Centre, aims to inspire, educate and empower students through a traditional, academic curriculum so that we may instil a life-long love of learning.

With a focus on the core traditional A-Level subjects, our goal is to create aspirational and well-rounded individuals who are ready to pursue higher education with the most prestigious universities and providers; regardless of their individual backgrounds.

We are excited by the prospect of delivering a new and unique approach to sixth form education in Leicester City and hope you will join us on our journey to excellence.

For more information, please visit:
www.beauchampcity.org.uk





Hire Facilities

Martin High School boasts an extensive range of facilities which are available to hire to the community outside of school hours. Facilities include sports courts and pitches, a sports Hall, a Hall with raised stage for productions, a music recording studio and numerous meeting rooms.

More information, including facilities at other Trust schools across Leicestershire, can be found at:

www.lionhearttrust.org.uk/venuehire



**MARTIN
HIGH SCHOOL**
Lionheart Educational Trust



Our Trust

The Lionheart Educational Trust was founded in April 2014 in order to establish a foundation for the improvement and enhancement of educational provision in the East Midlands.



Our aim is to provide a range of educational experiences that are challenging, equitable, enjoyable and are able to break down any barriers so that all can succeed. This involves seeking to create lifelong learners and offer outstanding provision for our 4-19 year olds.

Our educational mission is simple; any young person from any background deserves an equal chance to be successful in whatever they choose to do. The Lionheart Educational Trust is committed to supporting young people to open doors to their futures and to feel confident that they can thrive in a competitive and ever-changing world.

We pledge this commitment through limitless enthusiasm and optimism to provide a platform for each young person's light to shine brightly. To fulfil our pledge, we commit to the 3 Ps: Pupil Centred, Positive and Professional. We know that promoting this positive and proactive approach that celebrates success unites school communities and breaks down barriers to learning.

As our journey continues, we believe that it is our moral imperative to continue to work closely with a range of educational providers so that as many young people can benefit from the high educational standards we set ourselves. For more information, please visit our Trust website at: www.lionhearttrust.org.uk



LIONHEART
EDUCATIONAL TRUST



“INSPECTORS RECOGNISED THE BROAD AND AMBITIOUS ACADEMIC, HOLISTIC AND EXTRA-CURRICULAR OFFER THAT OUR LEARNERS ENJOY, NOTING THAT THEY ARE HAPPY TO ATTEND SCHOOL AND STAFF ARE HAPPY AND PROUD TO WORK HERE.”

OFSTED 2024

MARTIN HIGH SCHOOL

Link Road, Anstey, Leicester
Leicestershire LE7 7EB



0116 236 3291

office@martinhigh.org.uk

www.martinhigh.org.uk

@martinhighsch

MartinHighSchoolAnstey



**MARTIN
HIGH SCHOOL**



**LIONHEART
EDUCATIONAL
TRUST**